

## Grid Search

**Materials** □ 2 playing grids for each player  
(*Math Masters*, p. 96)

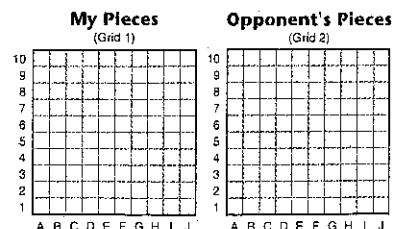
**Players** 2

### Directions

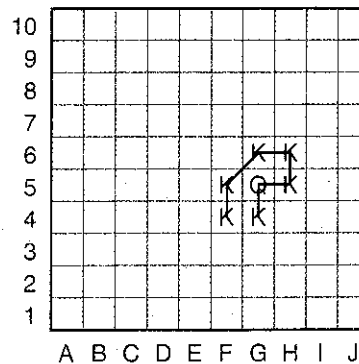
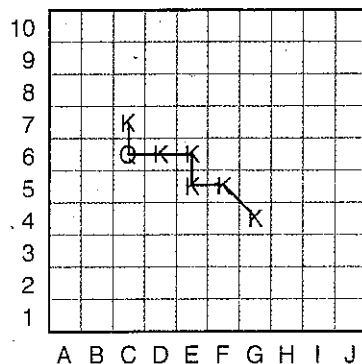
Players sit so neither player can see what the other player is doing. Each player uses two grids (see the margin).

**Advance Preparation:** Before the start of the game, each player secretly decides where to place a queen and 6 knights on Grid 1. They write the letter Q to record the location of the queen and the letter K to record the location of a knight.

- The queen may be placed on any square.
- The knights may also be placed on any of the squares, provided that the queen and the knights can all be connected, without skipping squares.



These are acceptable arrangements of the pieces:



These arrangements are *not* acceptable because the pieces cannot be connected without skipping squares.

